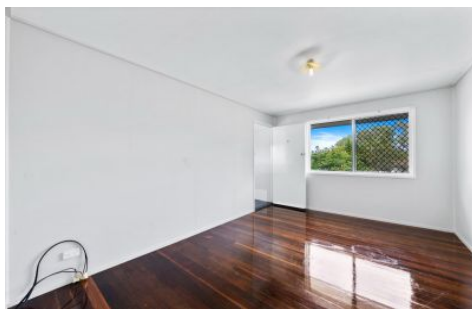




**CROWNE**  
REAL ESTATE



## 21 Overell Crescent Riverview QLD

4 2 1

Welcome to 21 Overell Crescent Riverview!

This property has just undergone some major upgrades and has been transformed from your standard three bedroom, one bathroom house to include an additional bedroom and ensuite making this a desirable home for the modern family.

Situated on a 598m<sup>2</sup> corner block in a handy location close to schools, shops and transport, and with easy access to the Ipswich Motorway and Warrego Highway for commuters, this one is sure to be popular with both owner occupiers and investors alike.

Stepping through the front door, the home opens up to a large, air conditioned lounge room and tidy, light filled kitchen with ample bench and cupboard space and upright stove. There are four bedrooms with gleaming polished hardwood floors serviced by the main bathroom which has shower over bath, vanity and separate toilet, and the

**Price** : Offers over \$499,000  
**Building Size** : 94 sqm  
**Land Size** : 598 sqm  
**View** : <https://www.crownrealestate.com.au/7989187>



**Mike Jones**  
0400 515 422



**Kirsty Dutney Jones**  
07 3288 8411

# 21 Overell St, Riverview



4 2 1 598m<sup>2</sup>

Total approx floor area (excluding carport and shed) 124m<sup>2</sup>



Whilst every attempt has been made to ensure the accuracy of the floor plan contained here, measurements of doors, windows, rooms and any other item are approximate and no responsibility is taken for any error, omission, or misstatement. This plan is for illustrative purposes only and should only be used as such by any prospective purchaser.