



# CROWNE

REAL ESTATE



### 3 Frost Street North Ipswich QLD

3 1 4

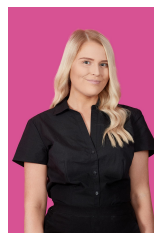
MORE PHOTOS TO COME - Situated on an 845m2 block, this property has a lot of offer a family.

Features include:

- Polished pine floorboards throughout
- Large lounge & dining rooms
- 3 bedrooms + sleepout:
- Bed 1 with double French doors leading to the 2-way bathroom
- Bed 2 with double French doors leading to the sleep out/craft room
- Sleep out has built in storage cupboards
- Large, walk through timber kitchen with gas appliances, oven and island bench
- 1 bathroom/ensuite with second toilet as well
- Huge carport with room for multiple cars, caravan, boat or trailer.

**Land Size** : 845 sqm

**View** : <https://www.crownerealestate.com.au/7958847>



**Kaitlyn Fenech**  
**07 3288 8411**