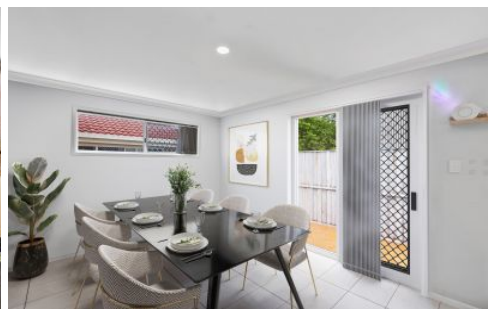




**CROWNE**  
REAL ESTATE



**38/11 Newtown Street East Ipswich QLD**

3 2 1

Presenting this beautifully maintained high-set townhouse in a gated complex with a pool, you won't be disappointed at its location and presentation. Located in popular east Ipswich, hides this wonderful gated community offering a tight knit community feeling all within walking distance to shops, schools and more.

**Price** : \$ 450,048  
**Building Size** : 156 sqm  
**Land Size** : 172 sqm  
**View** : <https://www.crownrealestate.com.au/7946716>

**Property features:**

- ? Spacious master with air-conditioning, ceiling fans, ensuite & large walk-in robe.
- ? Remaining 2 bedrooms are equally impressive in size and feature ceiling fans & large built-in robes.
- ? Stylish main bathroom features a large modern vanity, large shower, bath tub and separate toilet
- ? Spacious air-conditioned living room which comfortably accommodated the largest of lounge suites.
- ? Kitchen boasts loads of bench & cupboards space, large



**Geoff Paulsen**  
0413 394 386



**Ally Briscoe**  
0411 161 836

# 38/11 Newtown St, East Ipswich



3 2 1

Total approx floor area 156m<sup>2</sup>



Whilst every attempt has been made to ensure the accuracy of the floor plan contained here, measurements of doors, windows, rooms and any other item are approximate and no responsibility is taken for any error, omission, or misstatement. This plan is for illustrative purposes only and should only be used as such by any prospective purchaser.