

CROWNE

REAL ESTATE



11 Pryde Street WOODEND QLD

3 2 2

Perfectly positioned in the prestigious suburb of Woodend you will find this gorgeous property to call home. This home has had extensive renovations completed with quality fixtures. All you need to do is move in and enjoy all this property has to offer.

As you step through the front door you will be impressed with the relaxed coastal feel of the home. Painted in a stunning grey and white colour palette with oak coloured laminate timber look flooring. The large open plan living room has been fitted with A/C and ceiling fans/ lights all remote controlled so you can relax with the touch of a button. White timber look blinds fitted to all windows complement the décor of the home.

From the living room you will absolutely love the kitchen! Beautiful galley style enhanced with pendant and downlighting, loads of storage, stunning benchtops and lots

Price : \$ 512,000
Land Size : 1113 sqm
View : <https://www.crownrealestate.com.au/6961419>



Danni Rasmussen
0400 007 805

11 Pryde Street, WOODEND

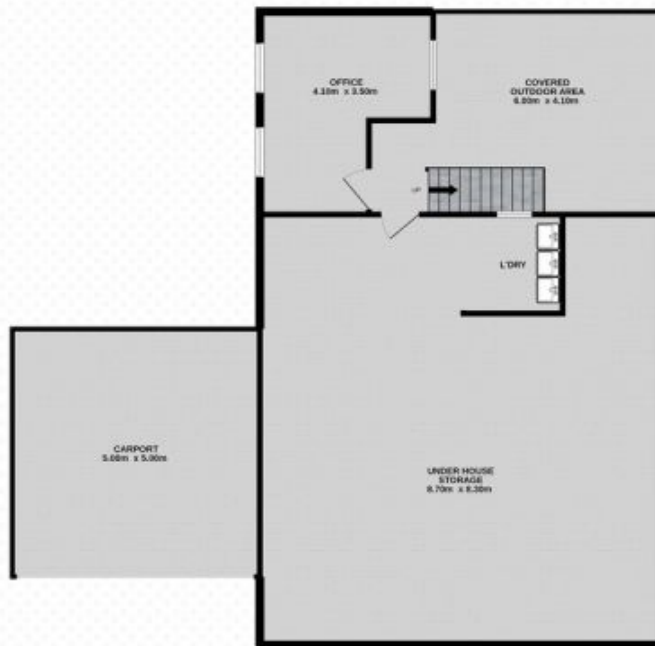


3 | 2 | 2 | 1113m²

Danni Rasmussen | 0400 007 805

Total approx floor area 130m² (first floor and office only)

GROUND FLOOR



FIRST FLOOR



Whilst every attempt has been made to ensure the accuracy of the floor plan contained here, measurements of doors, windows, rooms and any other items are approximate and no responsibility is taken for error, omission or mis-statement. This plan is for illustrative purposes only and should only be used as such by any prospective purchaser. The services systems and appliances shown have not been tested and no guarantee as to their operability or efficiency can be given.