



CROWNE
REAL ESTATE



13 Boundary Street Moores Pocket QLD

3 1 5

This is an incredible opportunity to secure a beautifully renovated home that also offers a unique opportunity to run 1 or 2 businesses from home and did I mention the amazing 9m x 6.5m shed in the rear yard?! All this and you are less than 5 minutes to both the Warrego highway and Ipswich CBD!

Price : \$ 575,000
Land Size : 610 sqm
View : <https://www.crownrealestate.com.au/6946857>

From the minute you arrive you will be immediately impressed by the presentation and attention to detail of this beautiful property. From the white picket fence at the front to the private and secure back yard, this home has been extremely well maintained.

The home has been elegantly renovated and offers 3 large bedrooms on the upper level, a stunning, modern kitchen and stylish bathroom, spacious lounge room, polished hardwood floors, air conditioning as well as front and rear



Kirsty Dutney Jones
07 3288 8411



Mike Jones
0400 515 422

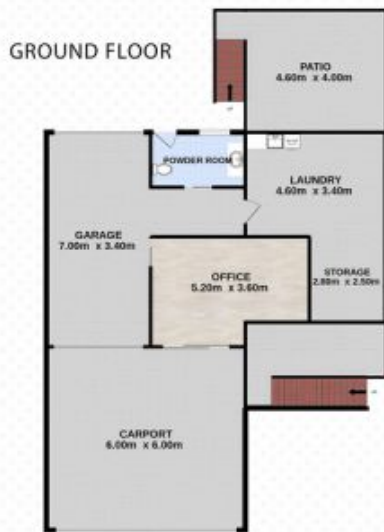
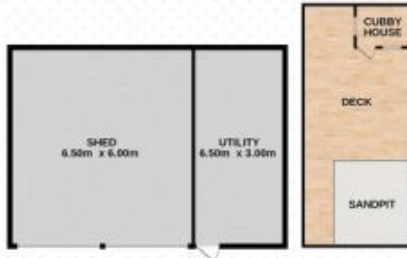
13 Boundary Street, MOORES POCKET



3 | 1 | 5 | 610m²

Kirsty Dutney-Jones | 0415 448 020

Total approx floor area 290m² (not including shed or kids play area)



Whilst every attempt has been made to ensure the accuracy of the floor plan contained here, measurements of doors, windows, rooms and any other items are approximate and no responsibility is taken for error, omission or mis-statement. This plan is for illustrative purposes only and should only be used as such by any prospective purchaser. The services systems and appliances shown have not been tested and no guarantee as to their operability or efficiency can be given.