



CROWNE
REAL ESTATE



23 Tongue Street East Ipswich QLD

3 2 2

This is an incredible opportunity to purchase this fantastic 90-year-old character home, that is waiting for you and your family to live in one of Ipswich's most covetable locations.

This beautiful period home is positioned in a quiet street with homes of similar calibre and is conveniently located off the main road. Therefore, it is not prone to traffic noise but still boasts the same locale and proximity to prestige public and private schools, the University as well as the Ipswich CBD, shops, electric train and sporting/recreation facilities.

The property has been meticulously maintained by the current owners and is as neat as a pin. The potential for this property is huge! You could steal inspiration from the neighbours who have lifted their homes and enclosed underneath to double the homes square meterage. By

Price : \$ 600,000
Building Size : 224 sqm
Land Size : 759 sqm
View : <https://www.crownrealestate.com.au/6945510>



Corey Athanates
07 3288 8411

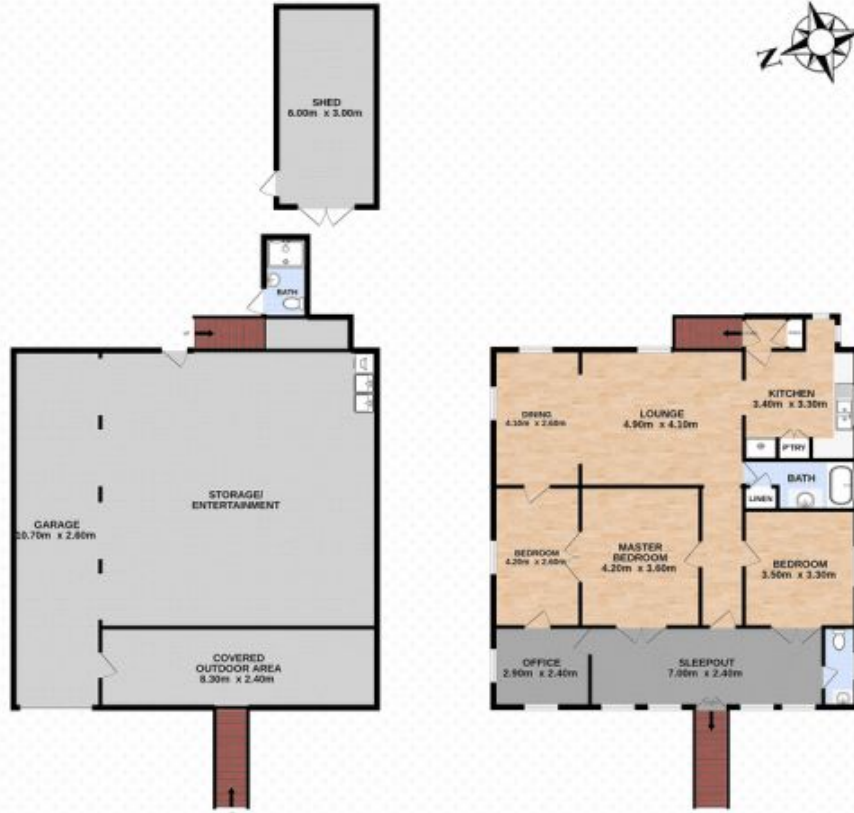
23 Tongue Street, EAST IPSWICH



3 | 1 | 2 | 759m²

Corey Athanates | 0413 992 959

Total approx floor area 224m² (not including garage and shed)



Whilst every attempt has been made to ensure the accuracy of the floor plan contained here, measurements of doors, windows, rooms and any other items are approximate and no responsibility is taken for error, omission or mis-statement. This plan is for illustrative purposes only and should only be used as such by any prospective purchaser. The services systems and appliances shown have not been tested and no guarantee as to their operability or efficiency can be given.