



CROWNE
REAL ESTATE



7 Dart Court Brassall QLD

4 2 3

Coming home to 7 Dart Court in Grammar Park Estate is like escaping to your own private retreat. Positioned in a whisper quiet cul-de-sac on an elevated 2018m2 allotment this is a home that allows for entertainment, relaxation and practicality without compromise.

Price : \$ 812,000
Land Size : 2018 sqm
View : <https://www.crownrealestate.com.au/6929763>





Outstanding features of this stunning property include:

- ? Large open plan kitchen/dining/family room with air-conditioning
- ? Separate lounge room which is currently used as a billiard room
- ? Well-appointed kitchen with huge island bench, pantry, all electric appliances including dishwasher along with an abundance of storage options
- ? Four bedrooms in total, all with air-conditioning, built in robes and ceiling fans



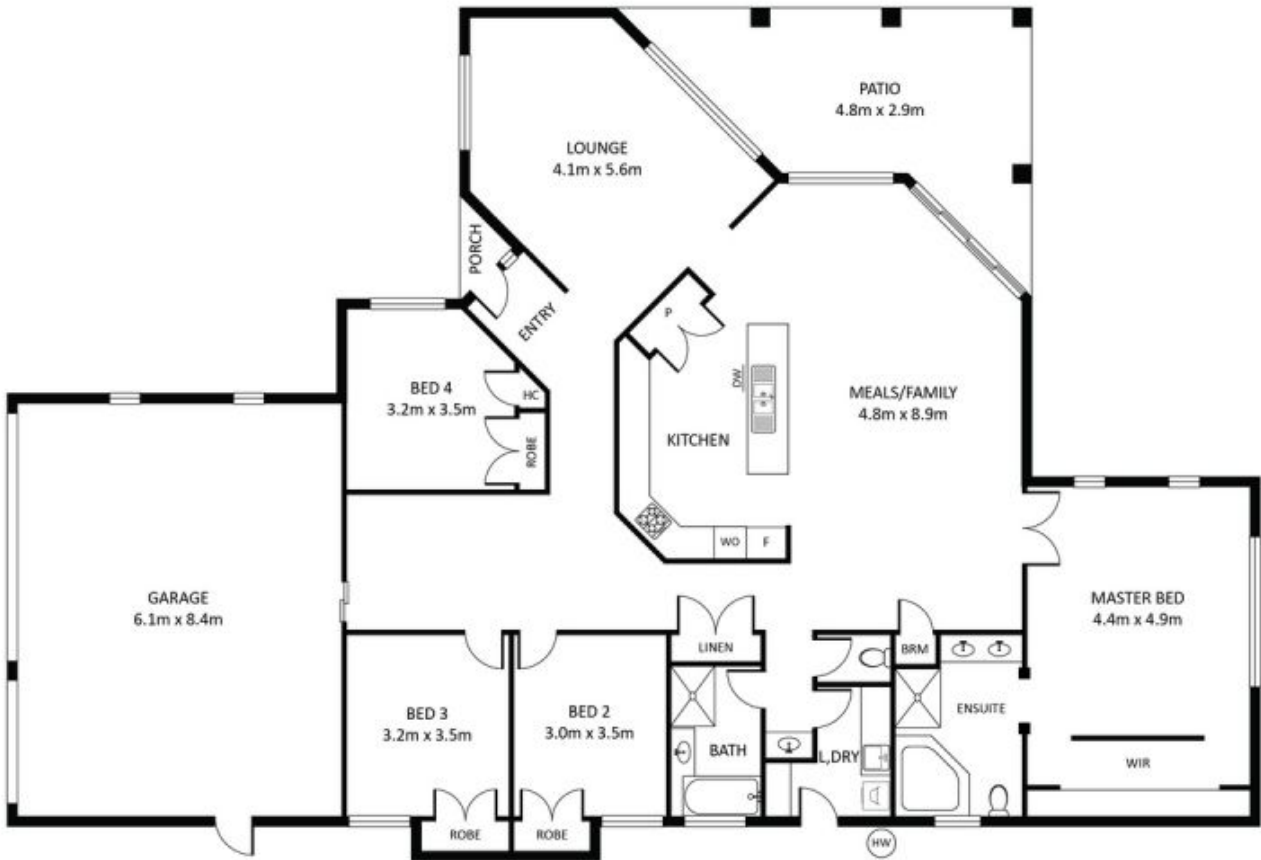
Del Marschke
0401 485 304

7 Dart Court Brassall

4  | 2  | 3  | 293m² 

Total approx floor area 270m² (including covered external areas)

Del Marschke | 0401 485 304



Disclaimer: Floor plan measurements are approximate and for illustrative purposes only.