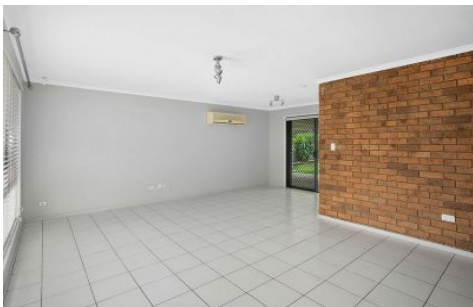




# CROWNE

REAL ESTATE



## 14 Hartley Crescent REDBANK PLAINS QLD

3 1 1

The home's current owners have taken great care of this beautiful home but the time has come for them to move on, giving you the opportunity to call it your own!

The tiled and air conditioned lounge room greets you upon entry, where you will find exposed brickwork and a neutral colour palate that suits all styles of furniture. This space leads through to the dining room and the kitchen, where you'll find an electric cooktop with a rangehood, an electric wall oven, along with an abundance of storage and bench space. The kitchen overlooks the large dining room, where you can access the rear yard via a sliding door.

There are three bedrooms in total, all of which are carpeted and come with built in wardrobes. The main bedroom has private access to the two-way bathroom, where you'll find a separate bathtub and shower, plus a separate powder

**Price** : \$ 371,000  
**Land Size** : 720 sqm  
**View** : <https://www.crownrealestate.com.au/6655439>



**Del Marschke**  
**0401 485 304**

14 Hartley Cres, Redbank Plains

3  | 1  | 1  | 145m<sup>2</sup> 



Whilst every attempt has been made to ensure the accuracy of the floor plan contained here, measurements of the doors, windows, rooms and any other items are approximate and no responsibility is taken for error, omission or mis-statement. This plan is for illustrative purposes only and should only be used as such by any prospective purchaser. The services systems and appliances shown have not been tested and no guarantee as to their operability or efficiency can be given.