



CROWNE

REAL ESTATE



17 Doyle Street Silkstone QLD

4 2 1

Located on a fully fenced low maintenance 426m2 corner block this circa 1920's family home is one of the best entry level character homes available in the market right now!

Price : \$ 355,000

View : <https://www.crownerealestate.com.au/6587867>

Featuring character traits associated with homes of this era along with quality renovations this home is the perfect place to relax and unwind.

Beautiful features of this home include -

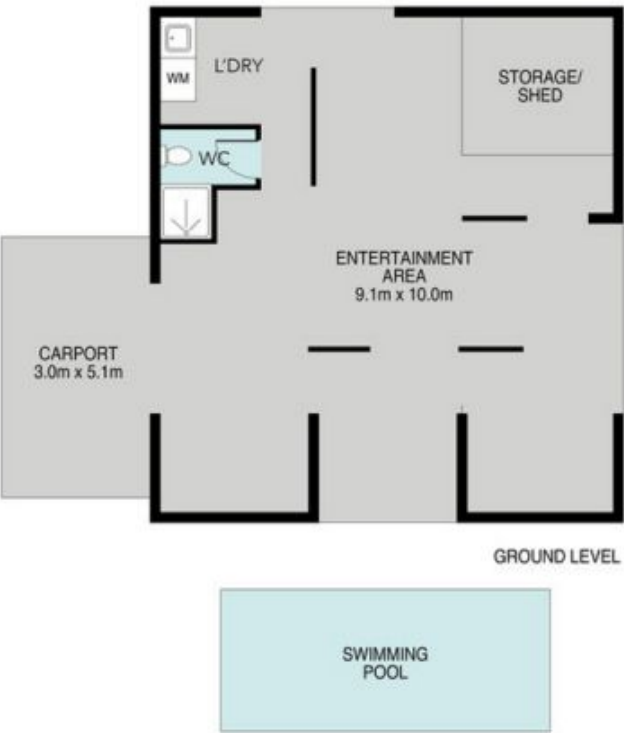
- ? Four bedrooms with feature windows
- ? Updated kitchen with chef's stove and dishwasher
- ? Separate dining room with servery
- ? Lounge room with double doors which open onto the front verandah
- ? Family bathroom with corner spa bath with shower, vanity & excellent storage



Del Marschke
0401 485 304

17 Doyle Street, Silkstone

4  | 1  | 1  | 191m² 



Whilst every attempt has been made to ensure the accuracy of the floor plan contained here, measurements of the doors, windows, rooms and any other items are approximate and no responsibility is taken for error, omission or mis-statement. This plan is for illustrative purposes only and should only be used as such by any prospective purchaser. The services systems and appliances shown have not been tested and no guarantee as to their operability or efficiency can be given.