



# CROWNE

REAL ESTATE



**3/8 South Street Ipswich QLD**

1 1 1

This stunning unit has undergone a complete transformation! Stylishly renovated and perfectly located within a short walk from the CBD and hospitals, this is certainly property you will look forward to coming home to at the end of the day.

**Price** : \$ 207,000

**View** : <https://www.crownrealestate.com.au/6334025>

Stepping inside, the interior reveals a free-flowing layout featuring an open plan living area. The adjoining well-appointed kitchen has been thoughtfully designed and features ample cabinetry, stainless dishwasher, electric oven and range hood along with a glass cooktop. Sit at the breakfast bench while you eat or work and look out at the CBD through the mature trees at the rear of the complex.



**Ally Briscoe**  
0411 161 836

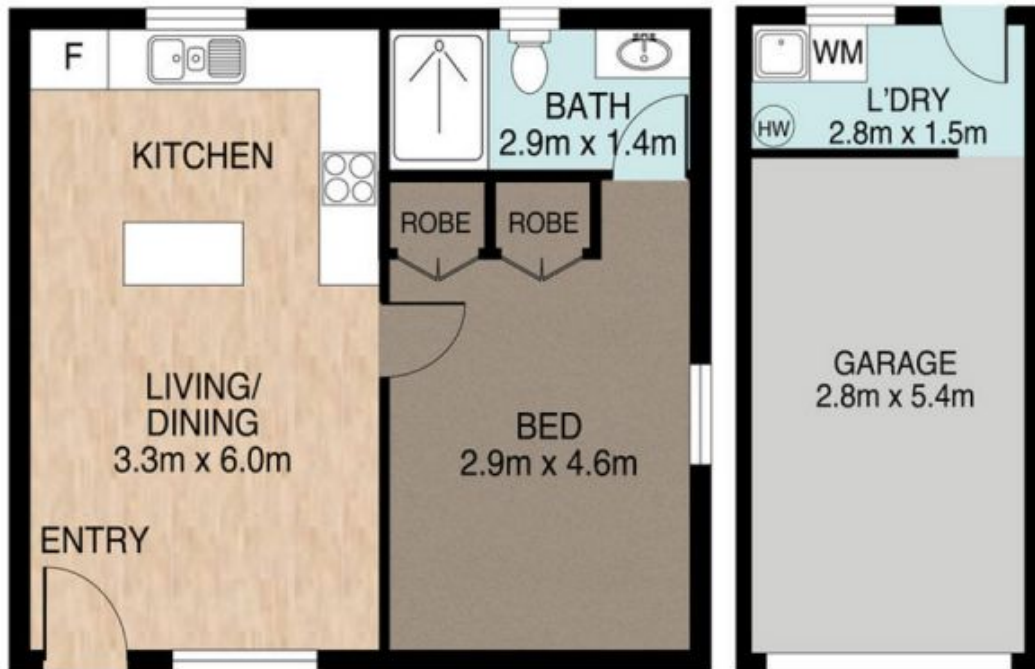


**Geoff Paulsen**  
0413 394 386

The spacious bedroom room would easily accommodate a queen-sized suite and boasts air-conditioning, ceiling fan, new carpet direct, built-in robe access the stunning ensuite

3/8 South St, Ipswich

1  | 1  | 1  | 65m<sup>2</sup> 



Whilst every attempt has been made to ensure the accuracy of the floor plan contained here, measurements of the doors, windows, rooms and any other items are approximate and no responsibility is taken for error, omission or mis-statement. This plan is for illustrative purposes only and should only be used as such by any prospective purchaser. The services systems and appliances shown have not been tested and no guarantee as to their operability or efficiency can be given.