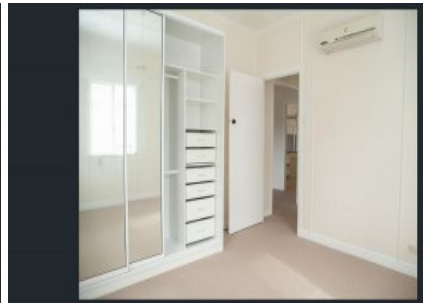
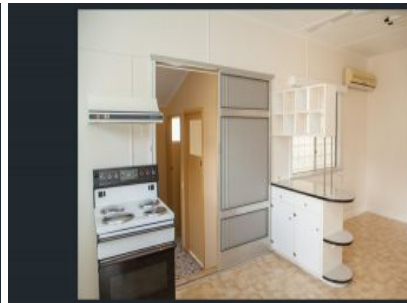
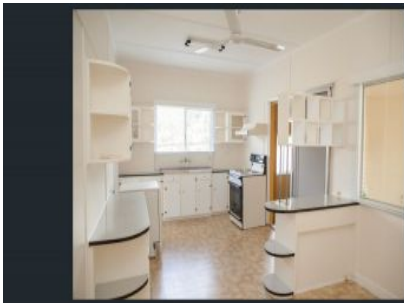




# CROWNE

REAL ESTATE



## 23 Theodore Street Brassall QLD

3 1 1

This sturdy home with hardwood frame and concrete stumps is a great opportunity for a first homeowner, a couple starting out or the savvy investor.

Sitting on an 809m2 corner block with 2 street access, this well presented home is in a quality street and is well presented. The spacious backyard is easily accessible with plenty of room for a shed or pool.

### Snapshot:

- Large carpeted lounge room
- 3 bedrooms with built in robes
- Retro bathroom
- Spacious eat in kitchen
- Adjoining dining area with ceiling fan
- Air conditioning
- High ceilings

**Price** : \$ 310,000  
**Land Size** : 809 sqm  
**View** : <https://www.crownrealestate.com.au/6329982>



**Mike Jones**  
0400 515 422