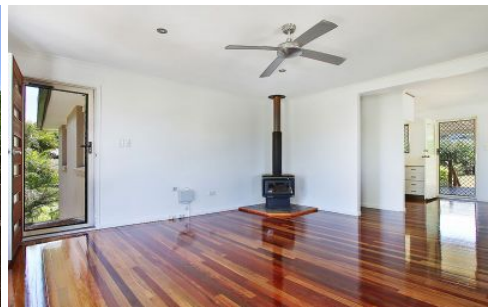




CROWNE

REAL ESTATE



22 Bowen Street Churchill QLD

3 2 2

Offering to the market a home packed full of options for you, your growing family, your home-based business or your investment portfolio.

The property is situated in a commanding position on an elevated, fully fenced 893sqm parcel of land. Offering dual level living, the property features upstairs are a spacious kitchen with executive appliances including 900mm freestanding Miele cooker as well as integrated Miele coffee machine, combine living and dining spaces with air-conditioning and 3 generous bedrooms all with air conditioning as well, all with built-ins and ceiling fans. The upper level offers a functional family bathroom with modern finishes and a fabulous large bath tub. The main upstairs living area features a wood burning fire place and alarm system. The stunning timber floor boards have been freshly polished. Off of the rear of the home is a large covered

Price : \$ 395,500
Land Size : 893 sqm
View : <https://www.crownrealestate.com.au/6165991>



Diann Platt
0407 673 756