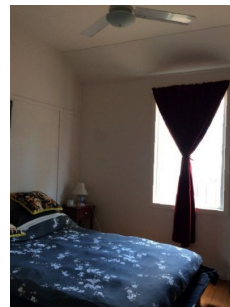
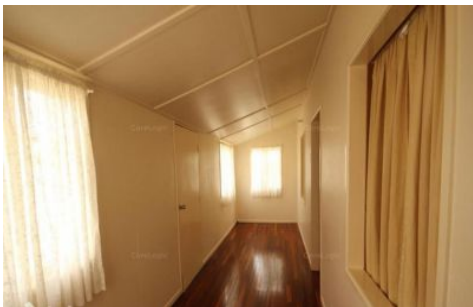




CROWNE

REAL ESTATE



20 Campbell Street Woodend QLD

3 1 1

Neat and tidy throughout, this charming cottage is sure to make you feel at home!

Offering a traditional layout with three bedrooms, open plan kitchen and dining, separate lounge room and storage space underneath the house. This home has all you could need! Boasting a huge backyard complete with a chicken coop, the kids will have plenty of room to play.

Located in a great central location, this home is within walking distance to St Edmund's College, St Mary's College and Ipswich Grammar School. Riverlink Shopping Centre, Brassall Shopping Centre, Train Stations and other amenities are only a quick drive away!

Features:

3 generous sized bedrooms with ceiling fans

Lounge with air conditioning

Polished floorboards

Carport

View : <https://www.crownerealestate.com.au/6011849>



Emerence Jonker
07 3288 8411



David Fall
(07) 3288 8411