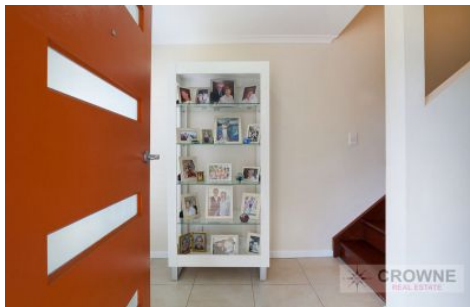




CROWNE

REAL ESTATE



42 Pommer Street Brassall QLD

4 2

Embracing practicality with understated luxury, this stylish residence achieves a timeless and enjoyable contemporary aesthetic, perfectly tailored for comfortable living in Ipswich's tropical climate.

This much loved home with friendly neighbours and private bushy outlook is nestled at the end of quiet elevated street and presents a rare buying opportunity for those looking for dual occupancy living.

The stunning features of the lower level of this family home include -

? Amazing kitchen with masses of storage space, dishwasher, gas cooktop, electric oven and a huge bench space for the chef of the family

? Open plan tiled living space which includes kitchen,

Price : \$ 390,000
Land Size : 637 sqm
View : <https://www.crownrealestate.com.au/5003006>



Mike Jones
0400 515 422