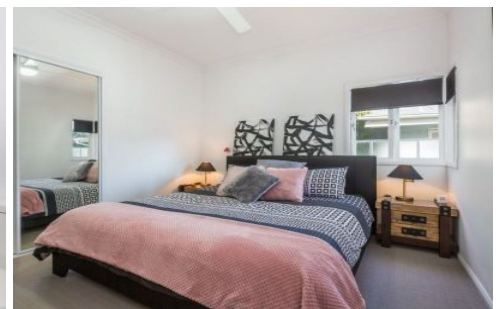




CROWNE
REAL ESTATE



12 Tiger Street SADLIERS CROSSING QLD

4 🏠 2 🚗 2 🚗

This stunning family home is situated in the highly sought after suburb of Sadliers Crossing, just walking distance to the Ipswich CBD, Grammar and Catholic Schools.

Land Size : 356 sqm
View : <https://www.crownrealestate.com.au/4999322>

A full renovation with brand new everything all round! Modern kitchen offers plenty of cupboard space, plus a host of quality stainless steel appliances and a breakfast bench. Open plan living/dining/kitchen for comfortable inclusive living.

All four bedrooms are of good size with carpet flooring, built in robes and ceiling fans Master is air-conditioned with ensuite. Fitted Holland blinds throughout

Stunning views and beautiful breezes from the front deck and large rear deck complete with brand new fitted shade cloths ready to entertain! Remote double lock-up garage with additional workshop space. Fully fenced and



Judy Tyne
0428 552 822