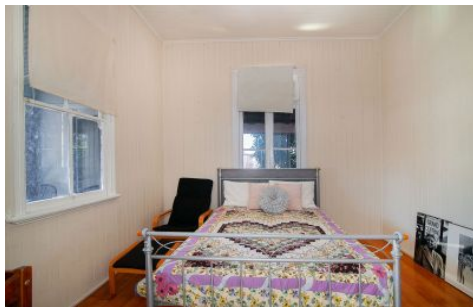




CROWNE
REAL ESTATE



7 Spring Street EAST IPSWICH QLD

3 1 2

An enviable property located in the heart of East Ipswich, this beautiful Queenslander is perfectly positioned on a massive fully fenced 1012sqm block which offers sub-division potential (subject to Ipswich City Council approval).

Price : \$ 327,000
Land Size : 1012 sqm
View : <https://www.crownrealestate.com.au/4989299>

The home itself offers all the traditional elements you would expect including elevated ceilings, and VJ walls polished timber floors.

Inside, the floor plan comprises of three large sized bedrooms, with the master leading directly out into the sunroom, all of which are serviced by the bathroom which offers a shower over bath combination, vanity and internal toilet.

The lounge and dining have an open plan layout and are of



Kirsty Dutney Jones
07 3288 8411



Mike Jones
0400 515 422