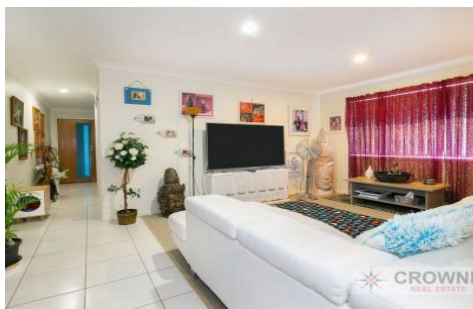




CROWNE
REAL ESTATE



33 Skardon Crescent BRASSALL QLD

4 2 2

This fantastic modern family home has so much more size and features than your average four-bedroom low set brick home in Brassall and it is located on an elevated and fenced 450sqm with a private bushland outlook.

This very low maintenance property currently has long term tenants in place paying \$375/week with a lease expiring on 23.01.2020 - For the investor, these fantastic tenants take great care of the home would love to stay on!

Features sure to impress include:

Spacious air-conditioned open plan living/dining & kitchen overlooking the covered outdoor entertaining and private rear yard. There is an additional carpeted living room allowing plenty of space for larger families.

Price : \$ 300,000
Land Size : 450 sqm
View : <https://www.crownrealestate.com.au/4765743>



Geoff Paulsen
0413 394 386