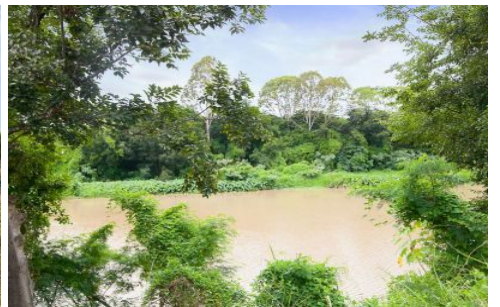




# CROWNE

REAL ESTATE



## 161 Moores Pocket Road MOORES POCKET QLD

3 2 4

Located on an absolute-riverfront 5,926sqm allotment just minutes from the heart of Ipswich, this family home represents incredible value.

Upon entry to the second level, you are greeted by the spacious and fully air-conditioned living room which leads out onto the front sunroom - the perfect place to enjoy your morning cuppa!

In the kitchen you will find plenty of storage and bench space including a large pantry plus a freestanding electric cooker, while the dining room is located nearby and is comfortable size.

All three of the bedrooms are of good size and offer air-conditioning, built in wardrobes and ceiling fans. Servicing these bedrooms is the upstairs bathroom with a

**Price** : \$ 290,000  
**Land Size** : 5926 sqm  
**View** : <https://www.crownerealestate.com.au/4705130>



**Geoff Paulsen**  
0413 394 386



**Ally Briscoe**  
0411 161 836