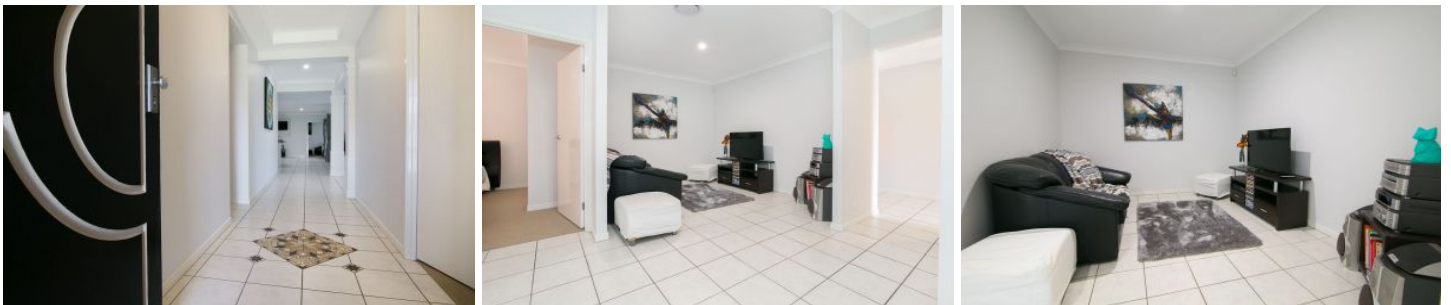




CROWNE
REAL ESTATE



13 Ivanhoe Place BRASSALL QLD

5 2 2

ENORMOUS FAMILY HOME WITH SIDE ACCESS TO REAR YARD
PERFECT FLOOR PLAN FOR THE LARGE FAMILY
BOASTS 5 BEDROOMS & 5 LIVING AREAS
HUGE DOUBLE LOCK UP GARAGE WITH STORAGE AREA

Price : \$ 510,000

View : <https://www.crownrealestate.com.au/4544892>

This Aidenbrook designed home is enormous! If you have a big family and are having trouble finding a home that will fit them all in and still give you your own space, then this is a must to inspect.



Kirsty Dutney Jones
07 3288 8411

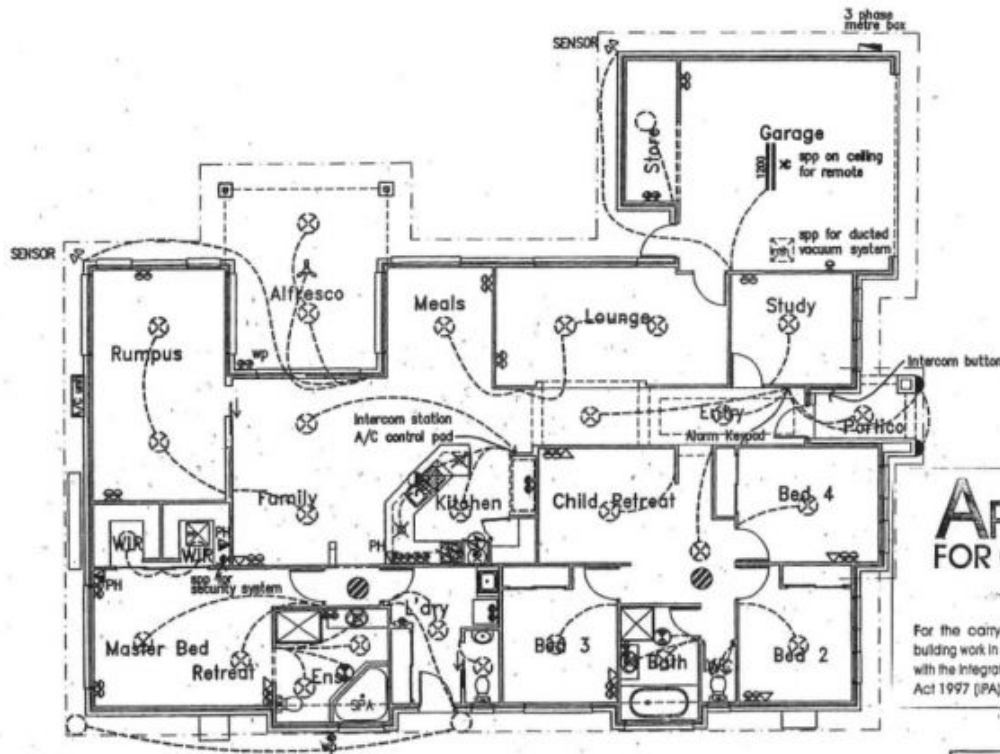


Mike Jones
0400 515 422

The large family home sits in a great street of well cared for homes and offers your family a well-designed floor plan that will ensure enough space for everyone.

As you walk through the front door there are 3 king-sized

RIVIERA 30'
VILLA



APPROVED
FOR CONSTRUCTION

- 7 JUN 2004

For the carrying out of building work in accordance with the Integrated Planning Act 1997 (IPA).



127 051 776 829

PROVIDE FULLY DUCTED AND ZONED REVERSE CYCLE (NON-INVERTER MODEL) A/C SYSTEM.