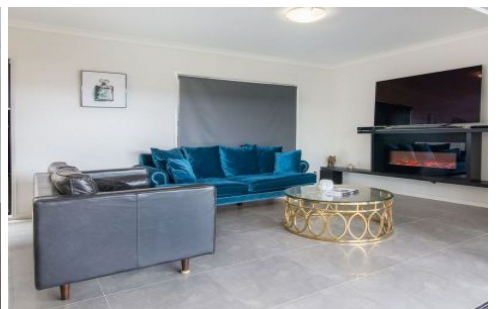




CROWNE

REAL ESTATE



7 Ribbonwood Street RIPLEY QLD

4 2 2

This stunning Valeco built family home is the ultimate in design, function and luxury!

The home is less than 12 months old and is perfectly positioned on a large 536sqm block in Ecco, Ripley's newest neighbourhood, just 11 minutes from Ipswich and 39 minutes from Brisbane. Ecco Ripley is a community ahead of its time, with a design philosophy that embraces a strong focus on family, community and the environment and offers unrivalled proximity to the future \$1.5 billion Ripley Town Centre.

The lower level of the home consists of a study nook, laundry room, powder room, open plan dining and living area boasting feature sleek fireplace that opens out to the fully covered outdoor entertaining space complete with TV and heater for those cooler months.

Price : \$ 485,000
Land Size : 536 sqm
View : <https://www.crownrealestate.com.au/4480729>



Kirsty Dutney Jones
07 3288 8411



Mike Jones
0400 515 422