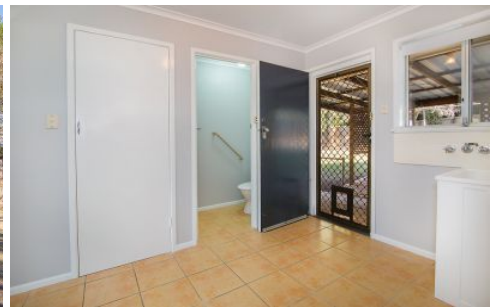




CROWNE

REAL ESTATE



3 Horan Street WOODEND QLD

4 1 2

LOCATION IS EVERYTHING

LOCATION- Prime 809m2 (Character Housing Mixed Density)

Located in the heart of sought after Woodend. This 4 bedroom brick home is in a PRIME LOCATION

* Bordering St Edmund's Secondary College, St Marys Secondary College, I.G S, St Marys Primary School and St Marys Church.

* Walk to CBD, Rail, Riverheart and Riverlink Retail

THE HOME:

- * A secure front porch leads inside
- * 4 Bedrooms, all with fans, the main is air conditioned
- * The separate lounge is spacious and air conditioned, light and airy
- * Modern tiled kitchen with adjacent dining area
- * Polished timber floors throughout, great for children

Price : \$ 312,500

View : <https://www.crownerealestate.com.au/4413557>



Mike Jones
0400 515 422



Kirsty Dutney Jones
07 3288 8411