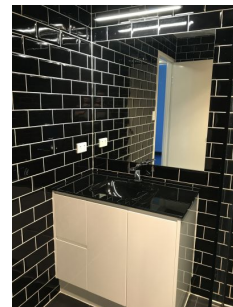
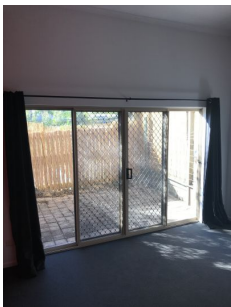




**CROWNE**  
REAL ESTATE



**6/14 Spencer Street REDBANK QLD**

2 1 1

**WALK TO REDBANK PLAZA! BEAUTIFUL SPLIT LEVEL TOWNHOUSE AVAILABLE NOW!**

This wonderful townhouse has all of the modern touches and is available now.

3 split levels to cater for every living space you would need. Located at the rear set of townhouses you will enjoy peace and tranquility.

Walk through your front door and you will be led down the hallway into the separate carpeted lounge area to enjoy peaceful TV/game time. Double sliding doors allows the light and breeze to flow through and leads to your own patio area to enjoy the outdoors!

As you walk to the 2nd level up the newly carpeted stairs you will come to the heart of the home.

A lovely bright kitchen with plenty of bench space and good sized pantry. You also have the dining area that overlooks the neighboring back yard bush. It feels like you are in the

**View** : <https://www.crownrealestate.com.au/4407320>



**Judy Tyne**  
**0428 552 822**