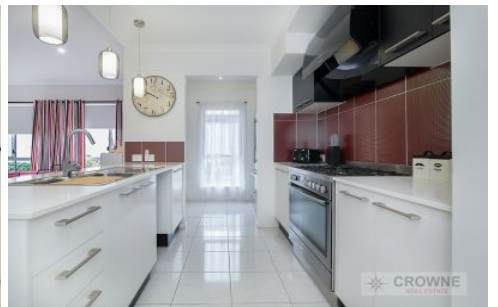
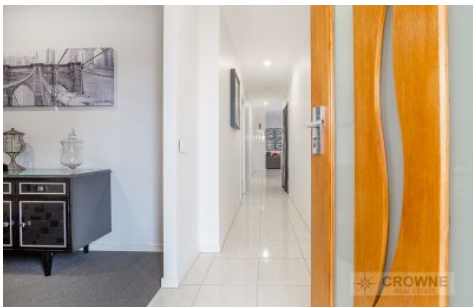




CROWNE

REAL ESTATE



14 Lillypilly Drive RIPLEY QLD

4 2 2

This is your opportunity to secure a gorgeous home in such a convenient position in the much sought after suburb of Ripley. Sophisticated in design and suited perfectly to either those who wish to live a low maintenance lifestyle or those savvy investors alike, this is one you must add to your shopping list.

Stunning features of this property include-

- Generous air conditioned master bedroom with a stylish ensuite
- Walk-in wardrobe to master with ample storage space
- Stunning finishes to both ensuite and main bathroom
- Open plan living spaces with high ceilings and air conditioning
- Simplistic modern kitchen with gas cook top and electric oven

Price : \$ 455,000

View : <https://www.crownrealestate.com.au/4340640>



Del Marschke
0401 485 304