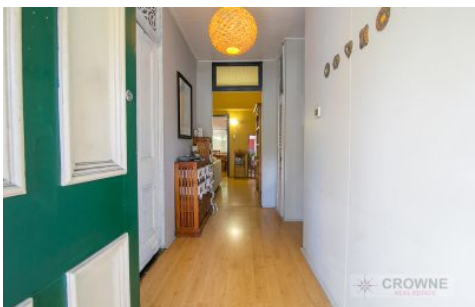




CROWNE

REAL ESTATE



44 Warwick Road IPSWICH QLD

3 1

There is great potential with this 1930's character home offering off-street parking combined with the Mixed Residential Zoning. The zoning allows the choice of home or professional offices (subject to Ipswich City Council approval) with ideal main road exposure! It is within walking distance to the medical precinct, CBD, university, schools and parks with a bus stop nearby.

Upon entry to the home you are greeted by soaring ceilings, VJ walls and fretwork breezeways. There are three genuine bedrooms on offer here, all with built-in robes, timber floors and with those gorgeous tongue and groove walls. Servicing these is a bathroom with a shower-over-bathtub combination and a separate toilet.

The spacious lounge room sits central in the home and leads off into the sunroom. The space is perfect for home

Price : \$ 292,000

View : <https://www.crownrealestate.com.au/4300769>



Kirsty Dutney Jones
07 3288 8411



Mike Jones
0400 515 422