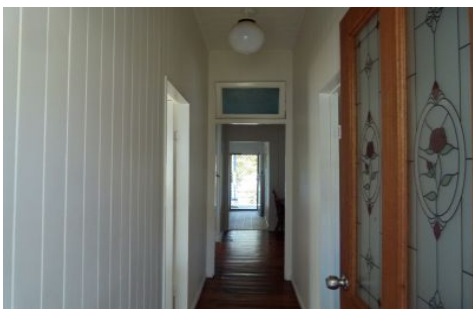




CROWNE
REAL ESTATE



33 Macgregor Street WOODEND QLD

3 1 1

1920'S Gabled cottage on dual street access in fabulous tightly held neighbourhood of friendly people and a demographic of elderly, middle aged and young families. Sitting on the high end of MacGregor St and in eyesight of St. Marys and St. Edmonds Schools. Stoll down to Ipswich Central and Parklands. I am always excited to present homes that have LOCATION, LOCATION as their selling point with the new structures and proposed plans for the Woodend/Ipswich area, it presents a great opportunity for 1st home owners, downsizers and investors alike. Woodend has had the highest increase in value in the past 12months with a change in the medium house price achieving a whopping 20.3%. Enjoy the benefits of living in this suburb full of Character Homes, Quaint Corner Stores, fabulous Private, Catholic, & Public Schools, Parklands, Rail & Bus Access, Shopping & Restaurants all at your doorstep.

Price : \$ 320,000

View : <https://www.crownrealestate.com.au/3848112>



Margaret Bannah
0408 741 987