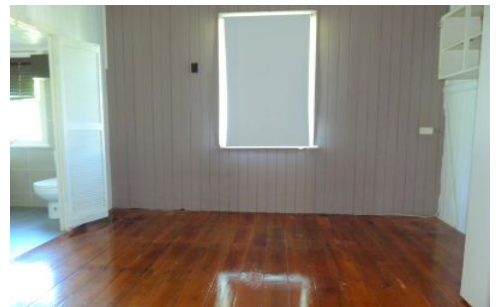
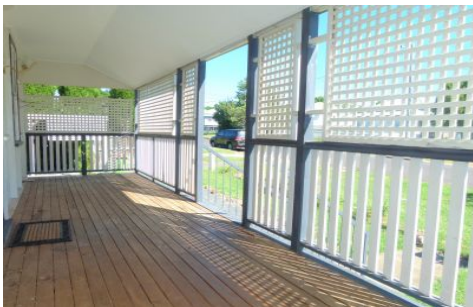




CROWNE

REAL ESTATE



44 Lusitania Street NEWTOWN QLD

3 1 1

This charismatic beauty is sure to delight, being located in a suburb that has demonstrated outstanding capital growth (11.4% in five years!) and overflowing with the character and charm that Ipswich is well known for. Set on a 511sqm corner allotment, this opportunity to purchase in one of Ipswich's most sought-after suburbs is not one you can afford to pass up.

There are three genuine bedrooms on offer here, all with soaring ceilings, tongue and groove walls and gorgeous polished timber flooring features reminiscent of a bygone era. The bathroom that services these has been expertly renovated and comes with a shower-over-bathtub arrangement, a spacious vanity and an internal toilet, and can be accessed via the main bedroom to provide you with a semi-ensuite!

Price : \$ 312,250

View : <https://www.crownrealestate.com.au/3618060>



Del Marschke
0401 485 304