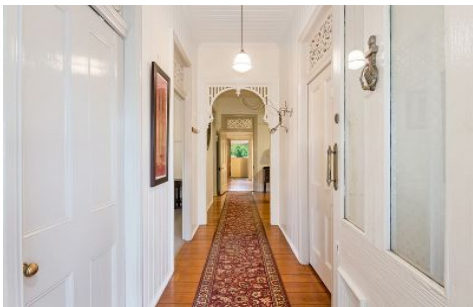




CROWNE
REAL ESTATE



31 Herbert Street SADLIERS CROSSING QLD

4 1 3

As Queensland's oldest provincial city, Ipswich has a rich history and is renowned for its architectural and cultural heritage. Sitting behind a traditional picket fence, on an impressive 2,403sqm allotment minutes from the hub of our great city, this masterfully-restored Queenslander embodies all of the qualities that homes in Ipswich are known for, without compromising on convenience.

Here you will find a grand old lady with all of the character and charm of a bygone era. Her unmatched street appeal is complimented perfectly by the generously-proportioned front verandah, where you can enjoy the peaceful surroundings with your morning cup of coffee in hand.

The lounge room sits adjacent to the entry of the home, showcasing the gorgeous character features to their fullest extent. Tongue and groove walls, gleaming timber floors

Price : \$ 515,000
View : <https://www.crownrealestate.com.au/3543883>



Mike Jones
0400 515 422